



Site Office & Enquiry:

Shubham Enclave, NH-1, GT Jalandhar Road, Amritsar - 143010, Punjab
Phone: +91 9958365558, Email: sales@mapleleaftowers.com
www.mapleleaftowers.com

Registered Office:

Simmro Infrastructure & Developers Pvt Ltd
B-3, Greater Kailash Enclave I, New Delhi - 110 048
Phone: +91 11 4656666, Fax: +91 11 26242939
www.bmkgroup.co.in

Disclaimer: The contents of this brochure are purely conceptual and do not represent in any manner a legal offering or promise. The plans and images shown in this brochure are schematic. The buildings plans, specifications, lay out plans, features and amenities are indicative and are subject to change without any prior notice as may be decided by the company or competent authority.



International luxury living
arrives in Amritsar.



Amritsar or *Ambarsar* is home to the Golden Temple or Harmandir Sahib, the spiritual and culture centre of the Sikh religion. Amritsar is sacred to both Hindu and Sikhs. The reference of city is found in the Ramayana as well. The city of Amritsar showcases a vibrant culture and a secular heritage. It has a glorious past, an exciting present and a promising future. The essential spirit of the city is found not only in its gurudwaras and temples, but also in the various cultural activities. It's also home to the widely popular amritsari cuisine. Amongst other sights are Jallianwala Bagh and the Indo-Pakistan border at Wagah, just a short distance from the city central. Amritsar is also famous for manufacturing of fine shawls, thick serge, silk goods and carpets. Presently, the city is witnessing rapid growth in industry and commerce. As a result, reputed real estate developers are setting up their prestigious projects, as there is a growing demand for residential houses.

Today, we pay our reverence to the holy city of Amritsar by offering a modern international living, yet strongly embedded in our traditional lifestyle.



World-class living spaces with the finest architecture and superlative amenities amidst lush green settings. A perfect amalgamation of Western living comforts and Eastern hospitality.

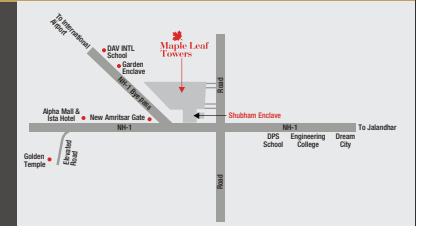
Welcome to Maple Leaf Towers.

Address

- Shubham Enclave, NH-1, GT Jalandhar Road, Amritsar, Punjab

Distance

- Just 2 minutes from Alpha Mall & Ista Hotel
- Just 10 Minutes from Golden Temple
- Just 20 Minutes from Airport





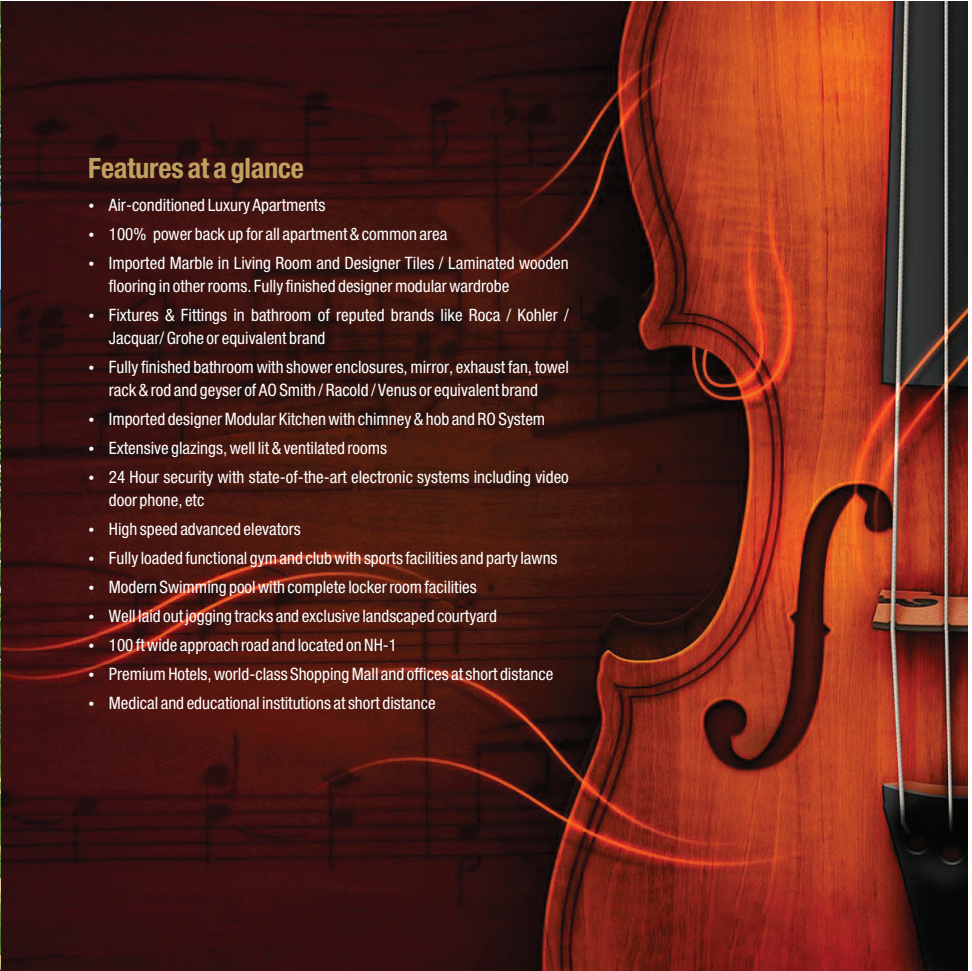
Of highest standards of living

Maple Leaf Towers is located in Shubham Enclave, a 67 acre world-class integrated township that offers finest living to the discerning people. Located on the National Highway 1, it offers excellent connectivity and locational advantage with respect to the city master plan. A mere 10 minutes drive from the Golden Temple, this portrait of residential bliss is painted across the canvas of a picturesque landscape. While, well beyond the fringes of the urban grime, yet not too distant from the airport and commercial centres of Amritsar. The enclave is an ensemble of villas and plots along with high-rise apartments. Further, the residential areas are shored up with shopping malls, medical institutions and international class academic institutions.



Of harmony,
design
and
aesthetics.

Maple Leaf Towers offers ultra modern and luxurious lifestyle in three magnificent elliptical towers overlooking the verdant greens of the meticulously planned township. The ingeniously designed apartments are constructed over a wide area surrounded by elegant landscaped greenery. Each floor is designed to provide ample space and openness for splendid living arrangements.



Features at a glance

- Air-conditioned Luxury Apartments
- 100% power back up for all apartment & common area
- Imported Marble in Living Room and Designer Tiles / Laminated wooden flooring in other rooms. Fully finished designer modular wardrobe
- Fixtures & Fittings in bathroom of reputed brands like Roca / Kohler / Jacuzzi / Grohe or equivalent brand
- Fully finished bathroom with shower enclosures, mirror, exhaust fan, towel rack & rod and geyser of AO Smith / Racold / Venus or equivalent brand
- Imported designer Modular Kitchen with chimney & hob and RO System
- Extensive glazings, well lit & ventilated rooms
- 24 Hour security with state-of-the-art electronic systems including video door phone, etc
- High speed advanced elevators
- Fully loaded functional gym and club with sports facilities and party lawns
- Modern Swimming pool with complete locker room facilities
- Well laid out jogging tracks and exclusive landscaped courtyard
- 100 ft wide approach road and located on NH-1
- Premium Hotels, world-class Shopping Mall and offices at short distance
- Medical and educational institutions at short distance



Of mind space and landscape

Maple Leaf Towers offers you choice of 2-BHK Apartments, 3-BHK Apartments and Penthouses. Each apartment built with the finest material and designed to compliment your discerning lifestyle.

2 BHK – 1358 sq. ft.

3 BHK – 2086 sq. ft.

Penthouse – 4890 sq. ft. + Lawn - 1770 sq. ft.





Of perfect craftsmanship

Nothing has been left to chance while designing Maple Leaf Towers. Whether it is the high wall split air-conditioners in all rooms, modular electrical accessories, laminated wooden flooring of the Master Bedroom, imported marble for the living room, hardwood door frame with European style flush panels, designer modular wardrobes, vitrified tiles of the modular kitchen, the thoughtfully designed anti-skid ceramic tiles for the spacious balcony, the aesthetically designed advanced elevators or simply the elegantly designed servant's room. In fact, each apartment at Maple Leaf Towers is designed taking care of the finest details for luxurious living.





Of rooms with views

Every room at Maple Leaf Towers has been designed to provide you more space - space to think, space to grow and space to spread your wings.

Each apartment gives you a feeling of spaciousness, as every room has an attached balcony large in size; designed to bring the outdoors...indoors.

So, wake up every day to the chirping of local birds and enjoy the gentle breeze scything through the thick foliage.



Of abundance of comfort

Maple Leaf Towers is complete with all modern amenities like air-conditioning, proper ventilation of all rooms, 24-hour security arrangements with technologically advanced surveillance systems, full-proof fire protection systems and professionally managed maintenance services.

Amenities at a glance

- International styled Club with sports facilities and party lawns
- Modern Swimming pool with complete locker room facilities
- Well laid out jogging tracks
- Spiritual centre with temples, mediation centre and Yoga within the township
- Premium Hotels, world-class Shopping Mall and offices at short distance
- Medical and educational institutions in and around the township

Of abundance of convenience

Time is a rare commodity in your life. We understand. This is why, from identifying your apartment to moving in with your family, we lend you a helping hand at every step.

The booking, the registration, the paperwork, and finally the ownership, you can rest assured we will do it meticulously to your complete satisfaction. And for once, you will experience the pleasure of owning your dream home minus the inconveniences.

Keeping in mind your valuable asset in Maple Leaf Towers, we provide professional Property Management Services for NRIs and Non-Resident owners, which encompasses complete upkeep of your property on regular basis, so that it is usable at any point of time for you or for rental, as per your instructions.



Of our creative force



About the BMK Group

The rise of the group is a saga of a visionary-entrepreneur Mr. Balbir Singh Kakar, a Canadian Citizen who migrated from India in the year 1969 and ventured into the real estate business by acquiring and managing various mega Residential and Commercial projects in the USA and Canada.

After success in the North American markets, in 1983 the Group made forays in the burgeoning Indian markets and established The BMK Group. Foremost being the launch of a budget hotel, The BMK, New Delhi. Later in 1997 the Group launched the first 5-Star deluxe hotel of Haryana The Bristol Hotel, presently a landmark in Gurgaon and followed by a dedicated business hotel The Acura BMK.

Today, The BMK Group is a well diversified conglomerate with formidable presence, not only in Hospitality, but also in Infrastructure, Information Technology, Education and Textiles.

Now, with Maple Leaf Towers, the BMK Group brings to Amritsar modern international living, yet strongly embedded in our traditional lifestyle.

Architects

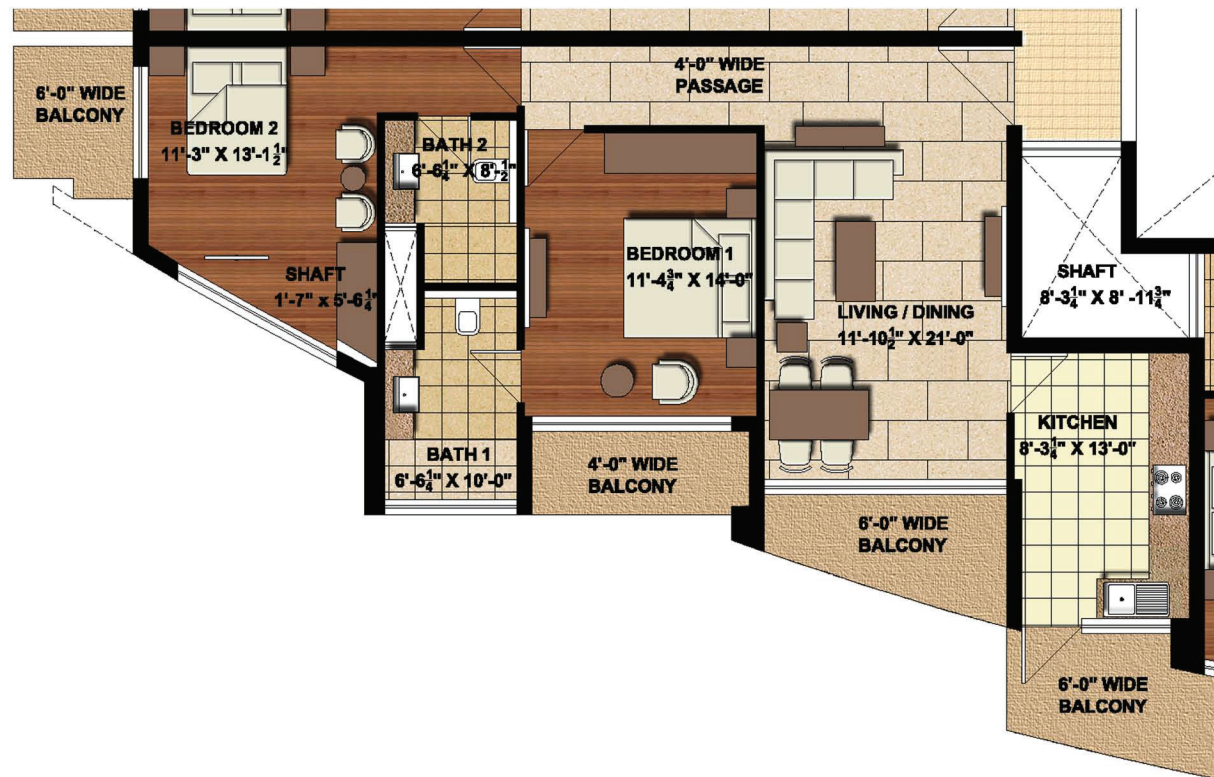
Ashwin Alva Associates

Ashwin Alva Associates are a leading architectural and landscape consultants of India. With a crack team of highly talented architects and designers, the firm has in its oeuvre many prestigious projects comprising an integrated bottling plant, a church, an exclusive night club, couture stores to high-end housing estates, premium residential condominiums, IT Commercial Complexes to Villas and Hotels.

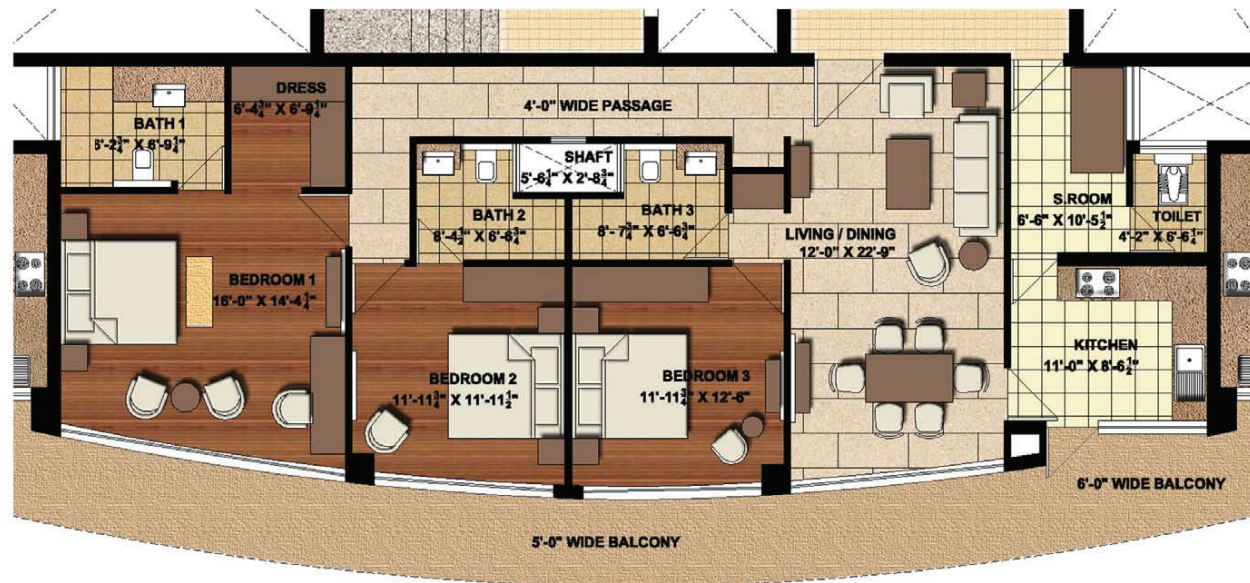



**Maple Leaf
Towers**

2 BHK - 1358 sq. ft.



3 BHK - 2086 sq. ft.



Tower A, B & C Typical Floor Plan



Tower A, B & C
Penthouse Suite, Lower Duplex
Area 4890 sq. ft. + 1770 sq. ft. lawn





Site Plan (Aerial View)



SPECIFICATIONS

LIVING/DINING

Wall Finish: POP punning with acrylic emulsion paint

Flooring: Imported marble

BEDROOMS

Wall Finish: POP punning with acrylic emulsion paint

Flooring: Designer tiles/laminated wooden flooring

Wardrobe: Designer Modular Wardrobe

BATHROOMS

Flooring: Designer vitrified/ceramic tiles

Dado: Designer vitrified/ceramic tiles

Fixtures & Fittings: Imported/composite/engineered marble/granite counter, sanitary fixtures in pleasing shades of Roca/ Kohler or equivalent brand, contemporary chrome plated single lever fittings of Roca/Grohe/Jacuar or equivalent brand, shower enclosures, mirror, exhaust fan, geysers of AO Smith/Racold/Venus or equivalent brand, towel rack, towel rod.

KITCHEN

Flooring: Designer vitrified/Ceramic tiles

Dado: Designer vitrified/ceramic tiles

Platform: Granite/composite stone counter with double bowl stainless steel sink and drain board Imported designer modular kitchen with chimney and hob, Ro system.

SERVANT ROOM & TOILETS

Flooring: Ceramic tiles

Dado: Ceramic tiles

Wall finish: Painted in Oil Bound Distemper

BALCONY

Wall Finish: Exterior emulsion paint

Flooring: Ceramic tiles

DOORS & WINDOWS

Doors: Seasoned hardwood frames with European style moulded shutters.

Main door will be flush door with veneer

Windows: Powder coated/anodized aluminium glazing/UPVC

FACILITIES

Electrical: Electrical copper wiring in concealed conduits for all light and power points, Modular Switches of Schinider/Legrand or equivalent brand, fans, TV/Telephone points

Power Back-up: 100% for all apartments & common areas

Air-conditioning: AC in bed rooms & Living Dining

Misc: Video Door Phone

OTHERS

External Facade: Aesthetic combination of texture paint finish and extensive use of glass

Lift Lobbies: Select marble/granite/composite stone/engineered stone cladding. High speed lifts

CLUB

Fully Functional Gymm, Change Rooms, Swimming pool, Party Hall with Lawn, Outdoor activity

The above specification are tentative and are merely indicative in nature , the architect & the developers reserve the right to alter the specification & facilities with out any further notice .